

SOUTH CAROLINA WORKERS' COMPENSATION EDUCATIONAL ASSOCIATION

# Connections 2007



31st Annual Educational Conference  
on Workers' Compensation

October 21-24, 2007  
Myrtle Beach

# From the President



Welcome to the 31st Annual Educational Conference on Worker's Compensation. We look forward to an instructive and exciting few days starting with the Kids' Chance Silent Auction on Sunday Evening.

Let me begin by extending a heartfelt thanks to the members of the 2007 Educational Conference Committee chaired by Walt Barefoot and co-chaired by Ron Jebaily. Everyone has given immeasurable time and full commitment in choosing topics of interest, securing the best speakers and incorporating some fun into our days at the Grand Strand.

As you can see from the listings in this agenda, the association has never enjoyed stronger support from sponsors and exhibitors. Please take a moment to thank these businesses and firms when you see them. It is because of their continued backing that we are able to offer excellent programs for you at an affordable cost.

Please remember to take the time to complete your conference survey so that we can determine how to better meet your professional goals and needs in future programs.

Thank you for participating in the 2007 SCWCEA Annual Educational Conference. We hope you find this meeting beneficial and look forward to seeing you at the 2008 Medical Seminar, February 24 – 26, 2008, at the Marina Inn at Grande Dunes.

Sincerely,

J. Russell Goudelock, II  
President

# 2007 SCWCEA Officers

## **President**

**J. Russell Goudelock, II**  
McAngus Goudelock and Courie, LLC

## **Vice President**

**Chris C. Daniel**  
Companion Property &  
Casualty Group

## **Secretary**

**Michael S. Swindell**  
Harris and Graves, PA

## **Treasurer**

**William L. Smith, II**  
Chappell, Smith and Arden

## **Board of Directors**

### **Eric C. Bailey**

Cardinal Logistics  
Management Corporation

### **William S. Griggs**

South Carolina Association  
of Counties

### **Walter H. Barefoot**

Turner, Padgett, Graham and  
Laney, PA

### **Ronald J. Jebaily**

Jebaily Law Firm, PA

### **J. Alan Bass**

South Carolina Workers'  
Compensation Commission

### **Carl H. Jacobson**

Uricchio, Howe, Krell, Jacobson,  
Toporek, Theos and Keith, PA

### **David Benenhaley**

Piggly Wiggly Carolina Company

### **W. Justin Kohl**

Defender Services, Inc.

### **Barbara A. Cullum**

Zurich North America

### **Patricia L. Rediehs**

GENEX Services, Inc.

### **S. Belinda Ellison**

Law Office of Belinda Ellison

### **Andrea Pope Roche**

South Carolina Workers'  
Compensation Commission

### **George N. Funderburk**

South Carolina Workers'  
Compensation Commission

### **Tony Timmerman**

Square D Company

### **Harry B. Gregory, Jr.**

South Carolina State Accident Fund

### **Harold J. Willson, Jr.**

Willson, Jones, Carter and  
Baxley, PA

# 2007 Educational Conference Committee

## **Committee Chair**

Walter H. Barefoot  
Turner, Padgett, Graham and  
Laney, PA

## **Eric C. Bailey**

Cardinal Logistics  
Management Corporation

## **David Benenhaley**

Piggly Wiggly Carolina Company

## **Donna R. Croom**

South Carolina  
Workers' Compensation  
Educational Association

## **Barbara A. Cullum**

Zurich North America

## **Chris C. Daniel**

Companion Property &  
Casualty Group

## **S. Belinda Ellison**

Law Office of Belinda Ellison

## **Bonnie Foster**

The Hartford

## **J. Russell Goudelock, II**

McAngus Goudelock and  
Courie, LLC

## **William S. Griggs**

South Carolina Association  
of Counties

## **Committee Co-Chair**

Ronald J. Jebaily  
Jebaily Law Firm, PA

## **W. Justin Kohl**

Defender Services, Inc.

## **Stanford E. Lacy**

Collins and Lacy, PA

## **Sandy Morgan**

Morgan and Associates, Inc.

## **Stephen R. Ratliff**

The Directions Group

## **Patricia L. Rediehs**

GENEX Services, Inc.

## **William L. Smith, II**

Chappell, Smith and Arden

## **Michael S. Swindell**

Harris and Graves

## **Gary Thibault**

South Carolina Workers'  
Compensation Commission

## **Tony Timmerman**

Square D Company

# In Appreciation

The success of SCWCEA's conferences and seminars is due, in large part, to the contributions of SCWCEA members and other workers' compensation practitioners who volunteer their time and energy to prepare papers and make presentations.

The South Carolina Workers' Compensation Educational Association is grateful to these dedicated individuals who share their expertise with us.

We are especially grateful to those speakers who are not SCWCEA members, but who contribute their time and share with us their knowledge of issues affecting Workers' Compensation.

Please take the time to thank the Sponsors and exhibitors of this year's conference. It is due to their continued support that we are able to provide you with excellent programs at an affordable price.

# General Conference Information

## Registration

Conference participants are required to register at the SCWCEA Registration Desk located in the foyer of Marriott's Grande Dunes Resort.

Registration Desk Hours:

Sunday, October 21	2:00 pm – 8:00 pm
Monday, October 22	8:00 am – 5:00 pm

On-site registrants can receive their credentials and materials one hour after payment has been received and processed.

## Name Badges

Conference credentials for registrants, exhibitors and guests are required at all times for admission to meetings, meals and events.

## Exhibits

Exhibits are located in sections 1 - 4 of the Atlantic Ballroom (Exhibit Hall) and throughout the foyer. All continental breakfasts and breaks will be located in the rear of the Exhibit Hall. Exhibitors who have individual door prizes will post their winners during the 10:30 am break on Wednesday, October 24 on the bulletin board at the registration desk.

Exhibit Hours are:

Sunday, October 21	2:00 pm – 8:00 pm
Monday, October 22	7:30 am – 5:00 pm
Tuesday, October 23	7:30 am – Noon
Wednesday, October 24	7:30 am – Noon

## Door Prizes

All paid registered attendees are eligible for one of the two \$500 cash door prizes.

One lucky individual will be selected from a random drawing sometime during the conference for \$500 cash. Individuals must be present and seated in the room at the time of the drawing to be eligible to win.

By visiting each of the exhibitors, having them initial the bingo card in the registration packet and dropping your completed form off at the registration desk before Wednesday's break, you could be eligible for the \$500 exhibitor cash drawing to be announced before the Annual Business Meeting. You must have a minimum of 60 bingo spaces completed on your form to be eligible for this prize.

## **Membership Information**

If you are not a member of the SCWCEA and would like to join, you may pick up a membership application at the registration desk or visit our website at [www.scwcea.org](http://www.scwcea.org) for more information.

## **Continuing Education Credits**

Educational credits are offered for the following Certified/Licensed Professionals:

CCMC	Certification for Case Managers	12.50 hours
CRCC	Certification for Rehabilitation Specialists	12.50 hours
CDMS	Certification for Disability Management Specialists	12.50 hours
CLEs	Continuing Legal Education ( <i>South Carolina</i> ) ( <i>includes 1 hour of Ethics</i> )	11.00 hours
	North Carolina Department of Insurance	6 hours

Please note that in order to received the total number of CEUs approved, you must sign the roster each day of the conference. This information is required by various certification boards in order to ensure accurate attendance. Additionally, you will need to sign your name as it is listed on your license. Failure to do so could result in a loss of credit hours.

Other professions may be eligible for credits by submitting a "Certificate of Attendance" along with the program agenda to your certification boards. These certificates will be available at the accreditation desk should you need a copy.

## **Save These Dates**

### **29<sup>th</sup> Annual SCWCEA Workers' Compensation Medical Seminar**

February 24 – 26, 2008  
Marina Inn at Grande Dunes  
Myrtle Beach

### **32<sup>nd</sup> Annual SCWCEA Educational Conference on Workers' Compensation**

October 22 – 26, 2008  
Marriott Beach and Golf Resort  
Hilton Head Island

Please note that rooms will not be available for reservations until conference registration materials are mailed

# Agenda

## Sunday, October 21

2:00 pm – 8:00 pm	Registration	Foyer
	Exhibit Hall Open	Atlantic 1-4 and Foyer
6:00 pm – 9:00 pm	<b>Kid's Chance Silent Auction Reception</b> <i>Entertainment by: U "N" I</i>	Atlantic 5-8

## Monday, October 22

7:30 am – 8:30 am	<i>Breakfast With The Commissioners</i>	Oleander Ballroom Lower Level
7:30 am – 5:00 pm	Exhibit Hall Open	Atlantic 1-4
8:00 am – 5:00 pm	Registration	Foyer
8:30 am – 8:45 am	<b>Opening Ceremony and Welcome</b> J. Russell Goudelock, II, Esq. McAngus Goudelock & Courie, LLC SCWCEA President <b>Kids' Chance Presentation</b> Steve Wukela, President	Atlantic 5-8
8:45 am – 9:30 am	<b>People, Wonderful People!</b> Glen Ward, Humorist Our work and relationships with people in our everyday lives	Atlantic 5-8
9:30 am – 10:15 am	<b>How Not to have a Litigated Claim</b> <i>Moderator</i> W. Justin Kohl, Defender Services, Inc. <i>Panelists</i> Eric C. Bailey Cardinal Logistics Management Corporation David Benenhaley Piggly Wiggly Carolina Corporation Ronald J. Jebaily, Esq., Jebaily Law Firm, PA W. Hugh McAngus, Esq. McAngus Goudelock and Courie, LLC	Atlantic 5 - 8
10:15 am – 10:30 am	<i>Break</i>	Atlantic 1 - 4



**Monday, October 22** *continued*

10:30 am – 10:40 am **Case Law Updates** Atlantic 5 - 8  
Michael W. Burkett, Esq.  
Willson, Jones, Carter and Baxley, PA  
Stephen B. Samuels, Esq.  
McWhirter Bellinger and Associates, PA

10:40 am – 12:30 pm **070107 Understanding the New SC Workers' Compensation Laws** Atlantic 5 - 8  
Stanford E. Lacy, Esq., Collins & Lacy, PC  
Samuel F. Painter, Esq.  
Nexsen Pruet Adams Kleemeier, LLC  
David T. Pearlman, Esq., The Steinberg Law Firm, LLP

12:30 pm – 12:40 pm **Case Law Updates** Atlantic 5 - 8  
William J. Luse, Esq., Chandler Law Firm  
Kelly F. Morrow, Esq.  
McAngus, Goudelock and Courie, LLC

12:45 pm – 2:00 pm *Luncheon* Oleander Ballroom  
Lower Level

2:00 pm – 3:00 pm **Concurrent Breakouts**

**Legal Ethics and Responsibility** Atlantic 5  
Barbara M. Seymour, Esq.,  
Office of Disciplinary Counsel  
South Carolina Supreme Court

**Town Hall: Tough Ethical Issues in Case Management** Atlantic 6  
Patricia L. Rediehs, GENEX Services, Inc.

**Forms, Fines & Fees** Atlantic 7  
Tammie Brasfield  
SC Workers' Compensation Commission  
Gregory Line  
SC Workers' Compensation Commission

**How Employers Deal with Injury** Atlantic 8  
David Benenhaley  
Piggly Wiggly Carolina Company

**PTSD: Crisis Intervention** Tides II  
Ronald S. Jones, Ph.D., Licensed Psychologist

3:00 pm – 3:15 pm *Break*

## Monday, October 22 *continued*

3:15 pm – 4:15 pm      **Concurrent Breakout Sessions**  
*Repeat*      same locations

4:30 pm – 5:00 pm      **Lacrappo Production**      Atlantic 5

## Tuesday, October 23

6:30 am      *Annual Fun Run*      Meet on Lower Level/  
Oleander Ball Room

7:30 am – 8:30 am      Continental Breakfast      Atlantic 1-4

7:30 am – Noon      Exhibit Hall Open      Atlantic 1-4 and Foyer

8:30 am – 9:30 am      **Time Management Is  
An Attitude!**      Atlantic 5 - 9  
Roger Reece  
Learn how to focus on productivity and manage  
priorities all while maintaining a positive attitude!

9:30 am – 9:40 am      **Case Law Updates**      Atlantic 5-9  
Suzanne C. Boulware, Esq., Collins and Lacy, PA  
Michael B. Eller, Esq.  
Turner, Padgett, Graham and Laney, PA

9:40 am – 10:30 am      **Our Changing Workforce:  
The Hispanic Population**      Atlantic 5-9  
Ted D. Wilburn, CSP  
Zurich Services Corporation

10:30 am – 10:45 am      *Break*

10:45 am – 11:30 am      **Ergonightmare!**      Atlantic 5-9  
Michael A. Alday, M.D., MPH  
Regional Occupational Health

11:30 am – 12:05 pm      **Basic Medical Terminology 101**      Atlantic 5-9  
Kevin W. Kopera,, M.D., MPH  
Center for Health and Occupational Services

12:05 pm – 12:15 pm      **Case Law Updates**      Atlantic 5-9  
Tara L. Austin, Esq.  
Coffee Chandler and Kent PA  
C. Daniel Vega, Esq.  
Chappell Smith and Arden

## Tuesday, October 23 *continued*

8:30 pm – 1:30 am      **Reception and Dance**      Atlantic 5-9  
Featuring Music by the Wallers

## Wednesday, October 24

7:30 am – 8:30 am      *Continental Breakfast*      Atlantic 1-4

7:30 am – noon      Exhibit Hall Open      Atlantic 1-4

8:30 am – 9:30 am      **Industrial Injuries to the  
Foot and Ankle**      Atlantic 5 - 9  
Michael J. Shereff, MD  
Orthopaedic Specialists of Charleston

9:30 am – 9:40 am      **Case Law Updates**      Atlantic 5 - 9  
Kelly W. Murphy, Esq., Young Clement Rivers, LLP  
Rebecca K. Halberg, Esq., Collins and Lacy, PA

9:40 am – 10:30 am      **Mediation: How To Do It**      Atlantic 5 - 9  
Michael E. Chase, Esq.  
Richard L. Hinson, Esq.  
Turner, Padgett, Graham and Laney, PA

10:30 am – 10:45 am      *Break*

10:45 am – 12:15 pm      **Mock Hearing**      Atlantic 5-9  
*Moderator:* Harry B. Gregory, Jr., Esq.  
SC State Accident Fund  
*Claimant's  
Attorney:* Matthew W. Jackson, Esq.  
Joye Law Firm  
*Defense  
Attorney:* Mikell H. Wyman, Esq.  
McAngus, Goudelock and  
Courie, LLC  
*Opinions:* Commissioner Susan S. Barden  
Commissioner J. Alan Bass  
Commissioner George N.  
Funderburk  
Commissioner Andrea Pope Roche  
Commissioner Derrick L. Williams  
SC Workers' Compensation  
Commission

12:15 pm – 12:30 pm      **Closing Remarks**      Atlantic 5- 9

12:30 pm – 1:00 pm      **Annual Business Meeting**      Atlantic 5-9

# Exhibitors *in numerical order by booth*

1	Integrated Care Management	41	Veracity Research Company
2	Gould & Lamb, LLC	42	Carolina Case Management
3	Black Diamond Services	43	Woodall & Broome, Inc.
4	Case-Closed Investigations	44	Florida Institute for Neurologic Rehabilitation
5	Palmetto Spine & Sports Medicine, PA	45	Care Pro Home Health
6	Niki's Int'l LTD	46	Case Management Solutions
7	Employer's Choice Network	47	The Southeastern Spine Institute
8	Interim Health Care	48/35	MHayes
9	Modern Medical, Inc.	49	First Advantage Investigative Services
10	Titan Investigative Alliance, LLC		
11	Orthofix, Inc.	50	The Rehab Center
12	Medical Services Company	51	GENEX Services, Inc.
13	Burns, White & Hickton	52	Claims Verification, Inc.
14	The Directions Group, Inc.	53	Walton Rehabilitation Health System
15	American Ramp Systems		
16	Global Options, Inc./Fraud & SUI Services	54	Joseph M. Still Burn Centers, Inc.
17	Ability Services Network	55	Abercrombie, Simmons & Gillette, Inc.
18	VQ OrthoCare		
19	Managed Care Options, Inc.	56	Columbia Rehabilitation Clinic, Inc.
20	PMSI		
21	Southern Rehab Network	57	The Warren Group
22	Carolina Investigations, Inc.	58	Advantage Surveillance, Inc.
23	VOC Med, Inc.	59	Kid's Chance of SC, Inc.
24	Doctors Care	60	LeFleur Transportation
25	Corvel Corporation	61	WFUBMC Burn Center
26	Cascade Disability Management	62	Palmetto Health Baptist Pain & Orthopaedic Care Center
27	JP Investigative Group, Inc.	63/64	American Rehabilitation, Inc.
28	IOS/FES	65	AccessOnTime
29	PMOA Emeric, Inc.	66	Express Dental Care
30	Albors Alnet Language & Transportation Services	67	Columbia Neurosurgical
31	Post Trauma Resources	68	Cat's Eye Private Investigations, LLC
32	Learning Services		
33	L&W Investigations/Carolinas	69	Corporate Pharmacy Services
34	Carlisle Medical, Inc.	70	GHUSA Multilingual Solutions
35/48	MHayes	71	Coventry Workers' Compensation Services
36	Select Physical Therapy	72	Total Medical Solutions
37	One Call Medical	73	Intracorp
38	Cypress Care	74	Abacus Research
39	Tri-Starr Investigations	75	Progressive Physical Therapy
40	HOMELINK	76	Network Synergy Group
		77	STOPS, Inc.
		78	Feather Case Management & Consulting, Inc.
		79	ConservCare
		80	R.J. Investigations, Inc.

# Exhibitors *in alphabetical order*

**Abacus Research**

3702-A Alliance Drive  
Greensboro, NC 27407  
800.246.8599

**Abercrombie, Simmons & Gillette, Inc.**

5300 Hollister, Suite 400  
Houston, TX 77040  
713.680.2333

**Ability Services Network (ASN)**

2905 Premiere Parkway  
Duluth, GA 30097  
704.578.9619

**AccessOnTime**

3210 Lake Emma Road, Suite 3090  
Lake Mary, FL 32746  
407.330.9113

**Advantage Surveillance, Inc.**

PO Box 788  
Thomasville, NC 27361  
888.696.3669

**Albors Alnet Language & Transportation Services**

5971 Brick Court #200  
Winter Park, FL 32792  
800.785.8634

**American Ramp Systems**

PO Box 624  
Columbia, SC 29202  
803.255.0233

**American Rehabilitation, Inc.**

PO Drawer 472228  
Charlotte, NC 28247  
704.541.1776

**Black Diamond Services**

PO Box 23458  
Ft. Lauderdale, FL 33307  
954.786.2021

**Burns, White & Hickton**

106 Isabella Street  
4 Northshore Centre  
Pittsburgh, PA 15212  
412.995.3247

**Booth 74**

*Paul Seguin  
Joshua Williams*

**Booth 55**

*Wanda Browning  
Michelle Revelle  
Jo Swain*

**Booth 17**

*Diane Baker  
Hilda Baker  
Cristy Ellis*

**Booth 65**

*Debra Adkins-Powell  
Pam Honaker*

**Booth 58**

*Will Gregory  
Jim Ruark*

**Booth 30**

*Patricia Isom  
Andy Small*

**Booth 15**

*Marc Gardner*

**Booths 63/64**

*Jill Bowyer  
Jo Lee MacLeod  
Shelia Marshall  
Stephanie Smith*

**Booth 3**

*Bryan Youngs*

**Booth 13**

*Michelle Allan  
Bruce McKnight  
Stephanie Yarbrough*

**Care Pro Home Health**  
1101 Elmwood Avenue, Suite G  
Columbia, SC 29201  
803.758.4000

**Booth 45**  
*Charles Aiken  
Sherman Benjamin*

**Carlisle Medical, Inc.**  
501 Boulevard Park East  
Mobile, AL 36609  
251.344.7988

**Booth 34**  
*Josie White  
John Shippen*

**Carolina Case Management**  
118 Wind Chime Court  
Raleigh, NC 27615  
919.846.9390

**Booth 42**  
*Kara Faust  
Katie Schopp*

**Carolina Investigations, Inc.**  
#2 Fir Street  
Spartanburg, SC 29303  
864.948.1333

**Booth 22**  
*Steve Harris  
Marty Henderson  
Ken Walter*

**Cascade Disability Management**  
15105-D John Delaney Drive, Suite 237  
Charlotte, NC 28277  
704.540.5047

**Booth 26**  
*Jack Dainty  
Deb Feller  
Stephanie Parrish*

**Case-Closed Investigations**  
514 S. Stratford Road, Suite 305  
Winston-Salem, NC 27103  
336.777.1114

**Booth 4**  
*Janet Lovelace*

**Case Management Solutions**  
3500 Parkway Lane, Suite 430  
Norcross, GA 30092  
704.490.2775

**Booth 46**  
*Kitti Chisholm*

**Cat's Eye Private Investigations, LLC**  
PO Box 26451  
Raleigh, NC 27611  
888.592.4190

**Booth 68**  
*Catherine Flowers  
Mona Mayes*

**Claims Verification, Inc.**  
6700 North Andrews Avenue, Suite 200  
Ft. Lauderdale, FL 33309  
888.284.2000

**Booth 52**  
*Travis Borden  
Eric Motel  
Tracy Nick*

**Columbia Neurosurgical**  
2728 Sunset Blvd  
West Columbia, SC 29169  
803.462.3625

**Booth 67**  
*Sylvia Miller  
Mary Rhyne*

**Columbia Rehabilitation Clinic, Inc.**  
2362 Two Notch Road  
Columbia, SC 29204  
803.799.7007

**Booth 56**  
*Bruce Filler  
Delle Yarborough*

**ConservCare**

6925 Lake Ellenor Drive, Suite 600  
Orlando, FL 32809  
800.999.5182

**Corporate Pharmacy Services**

PO Box 1950  
Gadsden, AL 35902  
256.543.9000

**CorVel Corporation**

200 Center Point Circle, Suite 290  
Columbia, SC 29210  
803.750.1518

**Coventry Workers' Compensation Services**

442 Palm Crest Lane  
Lake Mary, FL 32746  
407.257.6632

**Cypress Care**

2736 Meadow Church Road, Suite 300  
Duluth, GA 30097  
678.730.2625

**Doctors Care**

4416 Forest Drive  
Columbia, SC 29206  
843.402.6834

**Employer's Choice Network**

PO Box 3110  
Matthews, NC 28105  
704.845.0713

**Express Dental Care**

5100 West Lemon Street, Suite 109  
Tampa, FL 33609  
888.539.0577

**Feather Case Management & Consulting, LLC**

11722 Gallant Ridge  
Houston, TX 77082  
704.975.0112

**First Advantage Investigative Services**

100 Carillon Parkway  
St. Petersburg, FL 33716  
888.898.0080

**Florida Institute for Neurologic Rehabilitation**

1962 Vandolah Road  
Wauchula, FL 33873  
800.697.5390

**Booth 79**

*Rick Shannon*

**Booth 69**

*Paige Bowling  
Glenn Cox*

**Booth 25**

*Cindy Benton  
Donn Koch  
Ferlando Montgomery  
Charlie Sears*

**Booth 71**

*Jamie Davis  
Osi Ogirri  
Tricia Soileau*

**Booth 38**

*Dan Dodd  
Chris Stephenson*

**Booth 24**

*Kitty Howell  
Liz Russell  
Nicole Spence  
Kelli Sturkie*

**Booth 7**

*Jenny Bartruff*

**Booth 66**

*Terri O'Neil*

**Booth 78**

*Bill Bivens  
Carolyn Reavis  
Shirley Vincent*

**Booth 49**

*Brian Adkins  
Melanie Howard  
John Marquis*

**Booth 44**

*Cindy Boyd  
Donn Check*

**GENEX Services, Inc.**

8310 University Executive Park Dr. Suite 520  
Charlotte, NC 28262  
704.503.4775

**Booth 51**

*Debra Gray  
Joan Nix*

**GHUSA Multilingual Solutions**

PO Box 220091  
Charlotte, NC 28222  
704.307.2332

**Booth 70**

*Sarah Michelle  
Marc Puigvert*

**Global Options, Inc.**

140 Amicks Ferry Road # 271  
Chapin, SC 29036  
803.600.4900

**Booth 16**

*Duane Graham  
Steve Wall*

**Gould & Lamb, LLC**

101 Riverfront Blvd., Suite 100  
Bradenton, FL 34205  
941.798.2098

**Booth 2**

*Jason Mostelliti  
Leesa Rice*

**HOMELINK**

257 Vine Cliff Drive  
Harvest, AL 35749  
888.567.4421

**Booth 40**

*Michael Ingram*

**Integrated Care Management**

5 Dunwoody Park  
Atlanta, GA 30338  
404.509.3101

**Booth 1**

*Jessica Tehas*

**Interim HealthCare**

16 Hyland Road  
Greenville, SC 29615  
864.627.1200

**Booth 8**

*Rhonda Moody  
Carol West*

**Intracorp**

212 Frances Green Drive  
Cary, NC 27519  
910.988.1643

**Booth 73**

*Jeffrey Simmons  
Rosemary Dimmic*

**IOS/FES**

8720 Red Oak Blvd., Suite 123  
Charlotte, NC 28217  
704.556.7555

**Booth 28**

*Pamela Fulbright  
Conitia Hearst*

**Joseph M. Still Burn Centers, Inc.**

1220 George C. Wilson Drive  
Augusta, GA 30909  
706.863.9595

**Booth 54**

*Matt Cox  
Jocelyn Hills*

**JP Investigative Group, Inc.**

9716 B. Rea Road # 211  
Charlotte, NC 28277  
704.243.1137

**Booth 27**

*LaYonda Early  
Joe Paonessa  
Christine Walsh*



**Kids' Chance of SC, Inc.**

PO Box 11155  
Columbia, SC 29211  
803.356.5862

**Booth 59**

Angie Kohl

**Learning Services**

707 Morehead Avenue  
Durham, NC 27707  
888.419.9955

**Booth 32**

Michel Weaver

**LeFleur Transportation**

219 Industrial Drive  
Ridgeland, MS 39157  
601.853.1823

**Booth 60**

Steve Buckner  
Daniel Riebock

**L&W Investigations/Carolinas**

9650 Strickland Road, Suite 103-311  
Raleigh, NC 27615  
919.847.3000

**Booth 33**

Duane Fauser

**Managed Care Options, Inc.**

6001 North Hwy A1A, PMB 8052  
Vero Beach, FL 32963  
866.581.1793

**Booth 19**

Ellen Anzalone  
Kim Dugger

**Medical Services Company**

11764-1 Marco Beach Drive  
Jacksonville, FL 32224  
904.646.0199

**Booth 12**

Bret Cads  
Gloria Cook  
Randall Corcoran  
Ashley Hernandez

**MHayes**

624 Sarah Lawrence Court  
Raleigh, NC 27609  
919.614.9594

**Booths 35/48**

Helen Froehlich  
Mark Foster  
Jon Nickey

**Modern Medical, Inc.**

7840 Graphics Way  
Lewis Center, OH 43035  
800.547.3330

**Booth 9**

Eric Kirk

**Network Synergy Group**

5440 Mariner Street, Suite 112  
Tampa, FL 33609  
813.207.0727

**Booth 76**

Brian Bell  
Art Hoath

**Niki's Int'l, LTD.**

PO Box 562111  
Charlotte, NC 28256  
704.331.6362

**Booth 6**

Monique Bew  
Monica Bew

**One Call Medical**

20 Waterview Blvd.  
Parsippany, NJ 07054  
973.257.1000

**Booth 37**

Shelly Bovell  
Donna Motley  
Shawn Spencer

**Orthofix, Inc.**  
1720 Bray Central Drive  
McKinney, TX 75069  
469.742.8839

**Booth 11**  
Brian Bellamy

**Palmetto Health Baptist Pain & Orthopaedic Care Center**  
223 Stoneridge Drive  
Columbia, SC 29210  
803.296.2415

**Booth 62**  
*Bud Clack*  
Rebecca Wadsworth

**Palmetto Spine & Sports Medicine, PA**  
3030 Ashley Town Center Dr., A-102  
Charleston, SC 29414  
843. 573.9997

**Booth 5**  
*Alan Sayer*

**PMOA Emeric, Inc.**  
676. S. University Blvd.  
Mobile, AL 36609  
800.486.8792

**Booth 29**  
*Yvonne Brenner*  
Steve Vardas

**PMSI**  
175 Kelsey Lane  
Tampa, FL 33619  
813.318.6751

**Booth 20**  
*Robbie Catalfu*

**Post Trauma Resources**  
1709 Laurel Street  
Columbia, SC 29201  
803.765.0700

**Booth 31**  
*Larry Bergmann*  
Dr. Nick Lind

**Progressive Physical Therapy**  
100 Jimmy Love Lane  
Columbia, SC 29212  
803.731.4055

**Booth 75**  
*Barry Fitch*  
Jonathan Pent

**RJ Investigations, Inc.**  
PO Box 498  
Redan, GA 30074  
770.322.2568

**Booth 80**  
*Ray Jackson*

**Select Physical Therapy**  
1007 Grove Road  
Greenville, SC 29605  
864.370.9211

**Booth 36**  
*Kent Clontz*  
Elizabeth Petty

**Southern Rehab Network**  
3725 National Drive, Suite 123  
Raleigh, NC 27612  
800.772.8914

**Booth 21**  
*Jennifer Bell*  
Lynn Norris

**STOPS, Inc.**  
8855 Grissom Parkway  
Titusville, FL 32780  
800.487.0521

**Booth 77**  
*Susan Floyd*  
Ted Free

**The Directions Group, Inc.**  
999 Lake Hunter Circle, Suite A  
Mt. Pleasant, SC 29464  
843.849.0400

**Booth 14**  
*Linda Hanf  
Stephen Ratliff*

**The Rehab Center**  
2610 E. 7th Street  
Charlotte, NC 28204  
704.375.8900

**Booth 50**  
*Tracy Campbell*

**The Southeastern Spine Institute**  
1106 Chuck Dawley Blvd., Suite 200  
Mt. Pleasant, SC 29464  
843.849.1551

**Booth 47**  
*Katie Solomon*

**The Warren Group**  
PO Box 1608  
Irmo, SC 29063  
803.732.6600

**Booth 57**  
*Dana Berry*

**Titan Investigative Alliance, LLC**  
8775 Centre Park Drive # 454  
Columbia, MD 21045  
410.964.0930

**Booth 10**  
*Anthony Crofton  
Mike Simms*

**Total Medical Solutions**  
1280 Upsala Road  
Sanford, FL 32771  
800.700.9393

**Booth 72**  
*Doris Hill*

**Tri-Starr Investigations**  
PO Box 1104  
Conyers, GA 30012  
770.388.9841

**Booth 39**  
*Chris Cleveland*

**Veracity Research Company**  
PO Box 814646  
Dallas, TX 75381  
800.654.2185

**Booth 41**  
*Travis Blythe*

**VocMed, Inc.**  
1352 Anderson Highway, Suite G  
Powhatan, VA 23139  
804.419.0201

**Booth 23**  
*Brian Bernas  
Gregory B. Henderson*

**VQ OrthoCare**  
18011 Mitchell South  
Irvine, CA 92614  
949.697.6709

**Booth 18**  
*Shirli de Saye  
Steve Tabor*

**Walton Rehabilitation Health System**  
1355 Independence Drive  
Augusta, GA 30901  
706.231.0700

**Booth 53**  
*Jim Goolsby  
Maureen Wright*

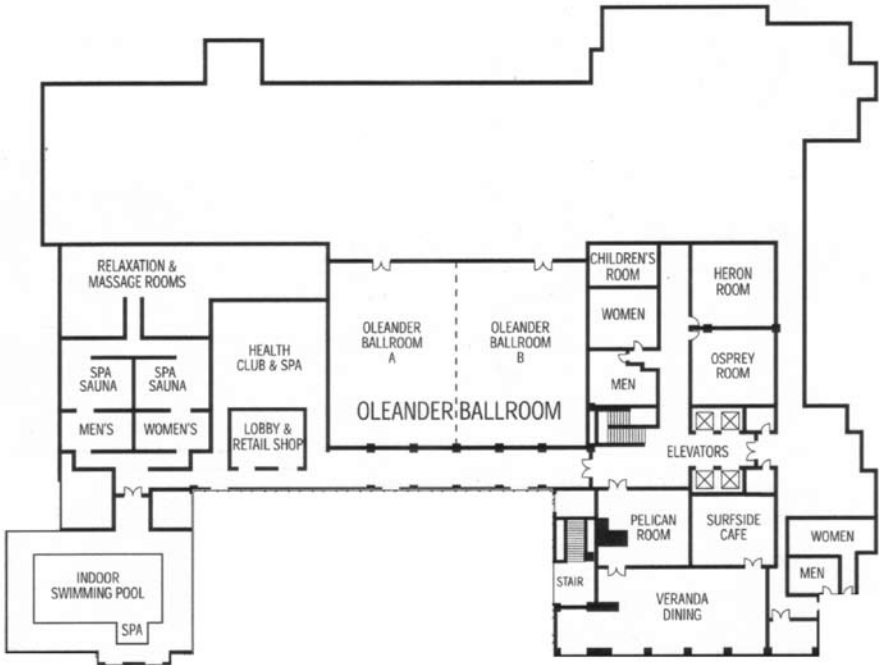
**WFUBMC Burn Center**  
Medical Center Blvd  
Winston-Salem, NC 27157  
336.306.0864

**Booth 61**  
*Dr. James H. Holmes, IV*  
*James C. Johnson, III*  
*Donna Joyner*

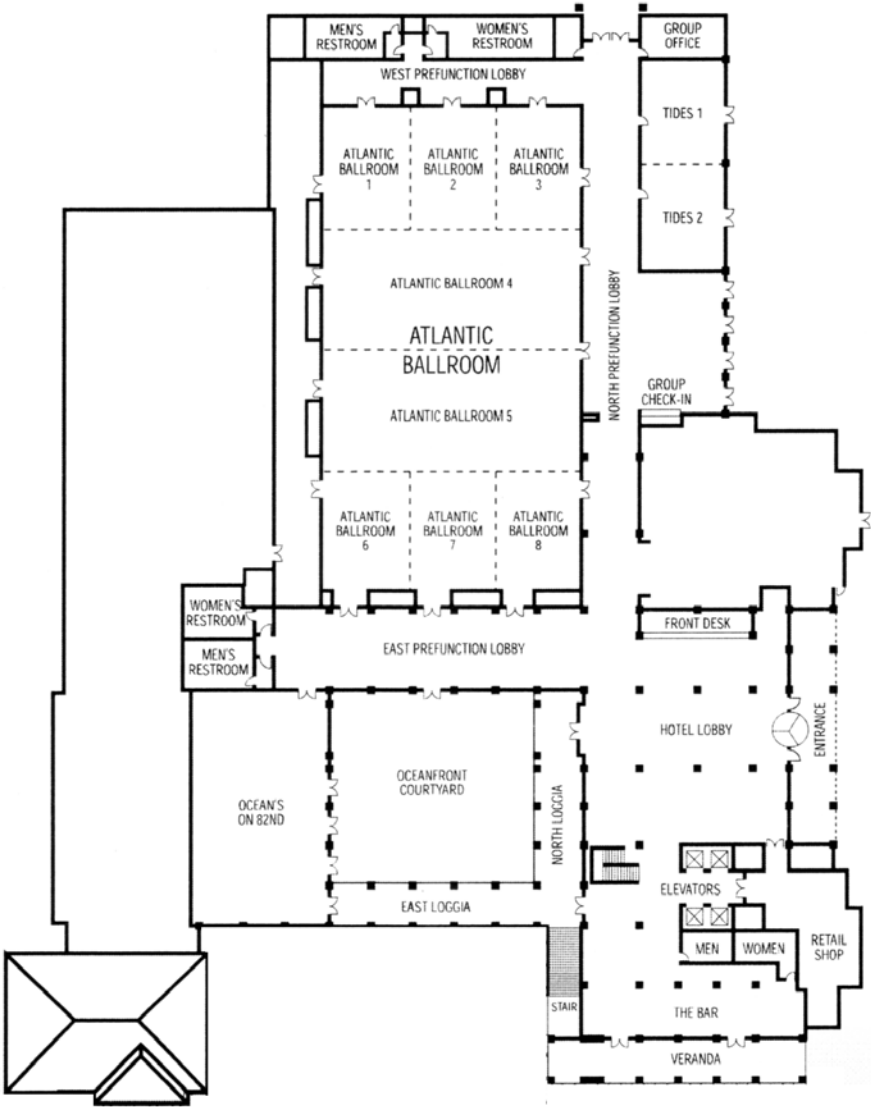
**Woodall and Broome, Inc.**  
PO Box 711  
Acworth, GA 30101  
800.460.7350

**Booth 43**  
*Denny Bertwell*  
*Phil Grupp*

# Floor Plan: Lower Level



# Floor Plan: Main Level



# Conference Sponsors

## Platinum Sponsors

CLAWSON & STAUBES, LLC  
ATTORNEYS AT LAW

TURNER PADGET  
TURNER PADGET GRAHAM & LANEY PA.

SOWELL GRAY

ELLIS LAWHORNE  
Ellis, Lawhorne & Sims, P.A., Attorneys at Law

SOWELL GRAY STEPP & LAFFITTE, LLC  
ATTORNEYS AND COUNSELORS AT LAW

WJC&B  
William Jones Carter & Daxley, P.A.  
Greenville Charleston Columbia  
WORKERS COMPENSATION DEFENSE

MG&C  
McAngus Goudelock & Courie, LLC

YOUNG CLEMENT RIVERS LLP  
ATTORNEYS AT LAW

## Gold Sponsors

Collins Lacy  
ATTORNEYS AT LAW

MCO INC  
Managed Care Options, Inc.

Companion  
Third Party Administrators, LLC

## Silver Sponsors

CHANDLER  
LAW FIRM

Intracorp®  
REGIONAL OCCUPATIONAL HEALTH

Richard WERN  
Lawyers

One Call Medical  
Inc.

AK  
ALLEN, KOPEL & ASSOCIATES  
INTERNATIONAL OCCUPATIONAL HEALTH CONSULTANTS

The Directions Group, Inc.  
Medical & Occupational Case Management

## Bronze Sponsors

JOYE  
LIFE FIRM

TechHealth  
improving the practice of law

Wake Forest University Baptist  
MEDICAL CENTER®  
Burn Center

Page Rehab  
www.pagerehab.com

J.P. INVESTIGATIVE  
GROUP, INC.

## Other Sponsor

Taken Insurance Services Corporation  
TIS